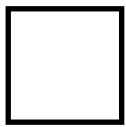


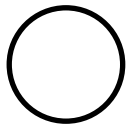
Genograms

Quick reference guide

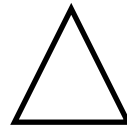
Individuals



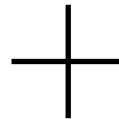
Male



Female

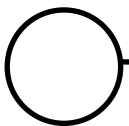


Gender unknown
(e.g. pregnancy)

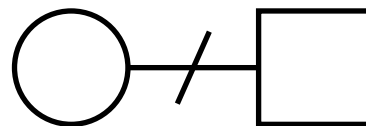


Death
(drawn over symbol for gender)

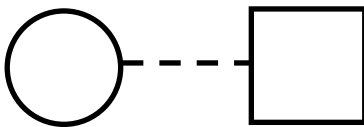
Relationships



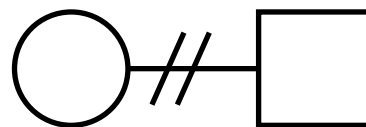
Enduring relationship
(marriage or cohabitation)



Separation

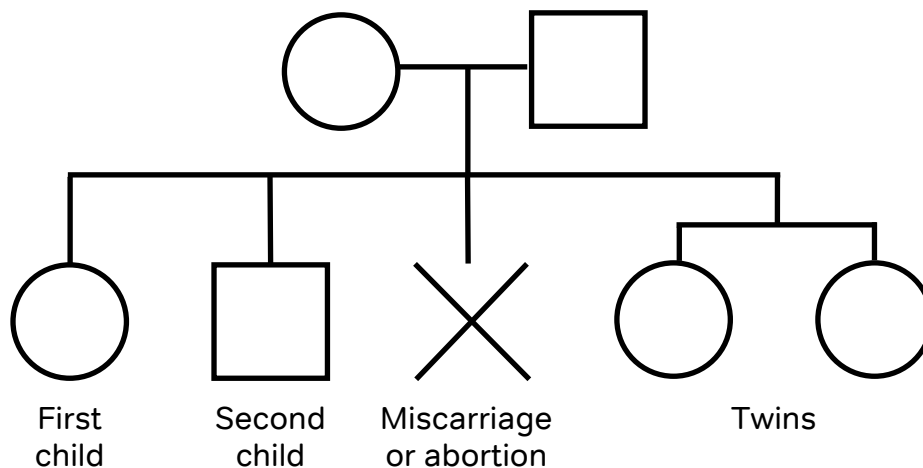


Transitory relationship



Divorce

Genogram structure



Please note: You may not need all of the symbols here, but they are included to ensure that you are aware of what symbols on other genograms you see may mean.